



TM

CODE CONSULTANTS, INC.

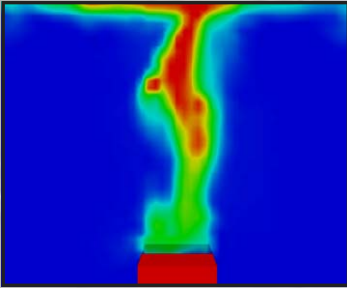
**The Fire Protection and
Life Safety Experts SM**

**Fire, Smoke, and
Egress Modeling**



Computer Fire, Smoke, and Egress Modeling

CCI uses its expertise at applying a range of fire, smoke, and egress models to develop cost effective solutions to fire protection and life safety issues.



CCI's principals and staff are members of many NFPA and ICC committees, including:

- Life Safety Code (NFPA 101)
- Installation of Sprinkler Systems (NFPA 13)
- National Fire Alarm Code (NFPA 72)
- Smoke Management Systems (NFPA 92B & 204)
- International Building Code-Fire Safety

CCI's licensed Fire Protection Engineers are registered in all 48 contiguous states and Puerto Rico.



CCI also works on behalf of the Authority Having Jurisdiction (AHJ) and the building owner/developer to provide third-party review of computer fire and egress modeling.

Fire and Smoke Modeling

CCI uses the most advanced fire and smoke modeling methods in the industry to:

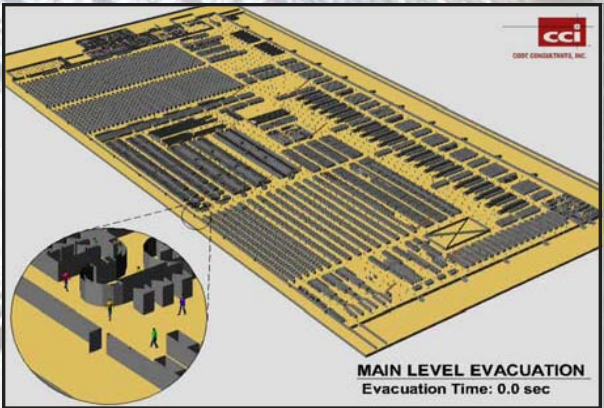
- Design economical smoke control systems
- Develop alternate fire protection and detection system designs
- Analyze alternate methods of construction
- Develop alternate methods of protection for structural elements

Benefits of Fire and Egress Modeling...

- Reduced atrium smoke exhaust and make-up fan size
- Cost savings on fireproofing
- Increased travel distance
- More economical fire protection & detection systems



Egress Modeling

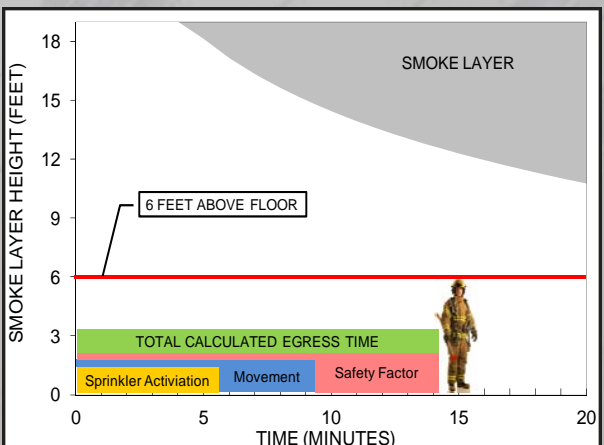


CCI uses egress modeling to:

- Calculate required egress time
- Evaluate egress times for emergency planning
- Develop alternate methods for occupant loads and travel distance
- Design efficient egress and ingress systems

CCI can use the models to create:

- Video animations of occupant egress during fire/emergency conditions
- Full color graphical representations of the building and occupants



Modeling Project Experience

Medical Facilities

- Columbia St. Mary's Main Hospital
- Immanuel Medical Center
- Lakeside Hospital
- New York Presbyterian Hospital
- Rachel's Courtyard at Presbyterian Hospital
- Salem Township Hospital Medical Office Building
- St. Peter's Hospital
- The Cleveland Clinic Foundation Heart Center
- Trinity Regional Medical Center



Sports Facilities

- Dolphin Stadium
- FedEx Field
- Marlins Ballpark
- Minnesota Twins Ballpark
- New Meadowlands Stadium
- New York Sports and Convention Center
- Newark Arena

Higher Education

- Cornell Life Sciences Technology Building
- CUNY Fiterman Hall
- Drexel University Integrated Sciences Building
- Eastern Michigan University Mark Jefferson Hall
- Miami University Psychology Building
- University of Michigan Ross School of Business
- University of Missouri Life Science Building
- Washington University Olin School of Business
- Yale University Hendrie Hall

Transit

- HAECO Hangar 2 at Chek Lap Kok Airport
- Moynihan Station



Gaming

- Foxwoods Resort - Casino
- Hollywood Casino
Lawrenceburg
- L'auberge du Lac Hotel &
Casino

Museums & Special Structures

- Connecticut Science Center
- Fort Worth Museum of Science and History
- Museum of Modern Art (MoMA) Education Wing
- New Museum of Contemporary Art
- World Trade Center Site Redevelopment



CODE CONSULTANTS, INC.

2043 Woodland Parkway, Suite 300
St. Louis, Missouri 63146
314.991.2633 phone
314.991.4614 fax

CODE CONSULTANTS PROFESSIONAL ENGINEERS, PC

215 West 40th Street, 15th Floor
New York, NY 10018
212.216.9596 phone
212.216.9619 fax

www.codeconsultants.com

The Fire Protection and Life Safety Experts SM

- Code Consultation
- Fire and Egress Modeling
- Accessibility Consultation
- Fire Alarm Design
- Mass Notification Design
- Fire Sprinkler Design

FOR MORE INFORMATION, CONTACT:

Joe Kolodziej
Director of Business Development
JoeK@codeconsultants.com